



Flight Plan & Site Survey

Created using **RPAS Wilco**[®]

Operation Name:	AMAS Colpitts
Pilot Name:	██████████
Pilot Certificate:	██████████
Flight Start:	February 9, 2024 5:35 PM
Flight End:	February 9, 2024 7:35 PM
Flight Area (Latitude):	51° 15' 13.00" N (51.254)
Flight Area (Longitude):	114° 9' 40.40" W (-114.161)
Altitude - Radius:	Alt: 200 ft - Rad: 100 m (0.05 nm)
Airspace:	UNCONTROLLED
FIR - Contact:	CZEG - 780-890-8397

Please ensure you received all required authorizations prior to flight.

Disclaimer

This Site Survey was created using RPAS Wilco by AIM Robotics. The flight plan contained is intended only for RPAS flights on the date/time and location specified. The user accepts all responsibility for the accuracy and completeness of the information contained.

For the complete Terms & Conditions, see

<https://rpswilco.com/#/tnc>



Included

- Site Survey
- Obstacles (if available)
- Nearby Aerodromes
- Canadian Aviation Regulations
- GFA
- Aerodrome Supplements
 - METAR & TAF (if available)
 - NOTAMS
 - CFS

Flight Map



MAP Details

	Latitude	Longitude
 MODEL	51° 15' 13.00" N (51.254)	114° 9' 40.40" W (-114.161)
 Pilot	[REDACTED] (51.2546)	114° 9' 44.00" W (-114.1622)

Airspace Classification



Overlying Airspaces

Class	Name	Floor	Ceiling
E	Calgary, AB CAE	5800MSL	12500MSL
B	Calgary, AB CAE	12500MSL	18000MSL
C	Calgary, AB TCA	8000MSL	12500MSL
B	Calgary, AB TCA	12500MSL	18000MSL
C	Calgary, AB TCA	5500MSL	8000MSL
E	T727 Airway	2200AGL	12500MSL
B	T727 Airway	12500MSL	18000MSL
C	Calgary, AB TCA	4800MSL	5500MSL

Nearest Aerodromes & Distance from Operation

AIRDRIE (CEF4 - AERODROME - Reg)	Lat: 51.264	Long: -113.934	15.854 KM	8.56 NM
YYC CALGARY INTL (CYYC - AERODROME - Cert)	Lat: 51.123	Long: -114.013	17.822 KM	9.62 NM
K. COFFEY RESIDENCE (CKC4 - HELIPORT - Reg)	Lat: 51.165	Long: -114.314	14.503 KM	7.83 NM
CALGARY (BOW CROW) (CEP2 - HELIPORT - Cert)	Lat: 51.103	Long: -114.215	17.162 KM	9.27 NM
ELEPHANT ENTERPRISES INC. (CEE2 - HELIPORT - Reg)	Lat: 51.115	Long: -114.296	18.05 KM	9.75 NM

Canadian Aviation Regulations

Division III — General Operating and Flight Rules

For full listing please visit : <https://laws-lois.justice.gc.ca/eng/regulations/SOR-96-433/FullText.html#s-901.27>

Visual Line-of-sight

- **901.11 (1)** Subject to subsection (2), no pilot shall operate a remotely piloted aircraft system unless the pilot or a visual observer has the aircraft in visual line-of-sight at all times during flight.
- **(2)** A pilot may operate a remotely piloted aircraft system without the pilot or a visual observer having the aircraft in visual line-of-sight if the operation is conducted in accordance with a special flight operations certificate — RPAS issued under section 903.03.

Procedures

- **901.23 (1)** No pilot shall operate a remotely piloted aircraft system unless the following procedures are established:
 - **(a)** normal operating procedures, including pre-flight, take-off, launch, approach, landing and recovery procedures; and
 - **(b)** emergency procedures, including with respect to
 - **(i)** a control station failure,
 - **(ii)** an equipment failure,
 - **(iii)** a failure of the remotely piloted aircraft,
 - **(iv)** a loss of the command and control link,
 - **(v)** a fly-away, and
 - **(vi)** flight termination.
- **(2)** If the manufacturer of the remotely piloted aircraft system provides instructions with respect to the topics referred to in paragraphs (1)(a) and (b), the procedures established under subsection (1) shall reflect those instructions.
- **(3)** No pilot shall conduct the take-off or launch of a remotely piloted aircraft unless the procedures referred to in subsection (1) are reviewed before the flight by, and are immediately available to, each crew member.
- **(4)** No pilot shall operate a remotely piloted aircraft system unless the operation is conducted in accordance with the procedures referred to in subsection (1).

Site Survey

901.27 No pilot shall operate a remotely piloted aircraft system unless, before commencing operations, they determine that the site for take-off, launch, landing or recovery is suitable for the proposed operation by conducting a site survey that takes into account the following factors:

- **(a)** the boundaries of the area of operation;
- **(b)** the type of airspace and the applicable regulatory requirements;
- **(c)** the altitudes and routes to be used on the approach to and departure from the area of operation;
- **(d)** the proximity of manned aircraft operations;
- **(e)** the proximity of aerodromes, airports and heliports;
- **(f)** the location and height of obstacles, including wires, masts, buildings, cell phone towers and wind turbines;
- **(g)** the predominant weather and environmental conditions for the area of operation; and
- **(h)** the horizontal distances from persons not involved in the operation.

Operations at or in the Vicinity of an Aerodrome, Airport or Heliport

- **901.47 (1)** No pilot shall operate a remotely piloted aircraft at or near an aerodrome that is listed in the *Canada Flight Supplement* or the *Water Aerodrome Supplement* in a manner that could interfere with an aircraft operating in the established traffic pattern.
- **(2)** Subject to section 901.73, no pilot shall operate a remotely piloted aircraft at a distance of less than
 - **(a)** three nautical miles from the centre of an airport; and
 - **(b)** one nautical mile from the centre of a heliport.
- **(3)** No pilot shall operate a remotely piloted aircraft at a distance of less than three nautical miles from the centre of an aerodrome operated under the authority of the Minister of National Defence unless the operation is conducted in accordance with a special flight operations certificate — RPAS issued under section 903.03.

Records

- **901.48 (1)** Every owner of a remotely piloted aircraft system shall keep the following records:
 - **(a)** a record containing the names of the pilots and other crew members who are involved in each flight and, in respect of the system, the time of each flight or series of flights; and
 - **(b)** a record containing the particulars of any mandatory action and any other maintenance action, modification or repair performed on the system, including
 - **(i)** the names of the persons who performed them,
 - **(ii)** the dates they were undertaken,
 - **(iii)** in the case of a modification, the manufacturer, model and a description of the part or equipment installed to modify the system, and
 - **(iv)** if applicable, any instructions provided to complete the work.
- **(2)** Every owner of a remotely piloted aircraft system shall ensure that the records referred to in subsection (1) are made available to the Minister on request and are retained for a period of
 - **(a)** in the case of the records referred to in paragraph (1)(a), 12 months after the day on which they are created; and
 - **(b)** in the case of the records referred to in paragraph (1)(b), 24 months after the day on which they are created.
- **(3)** Every owner of a remotely piloted aircraft system who transfers ownership of the system to another person shall, at the time of transfer, also deliver to that person all of the records referred to in paragraph (1)(b).

ALBERTA

AERODROME/FACILITY DIRECTORY

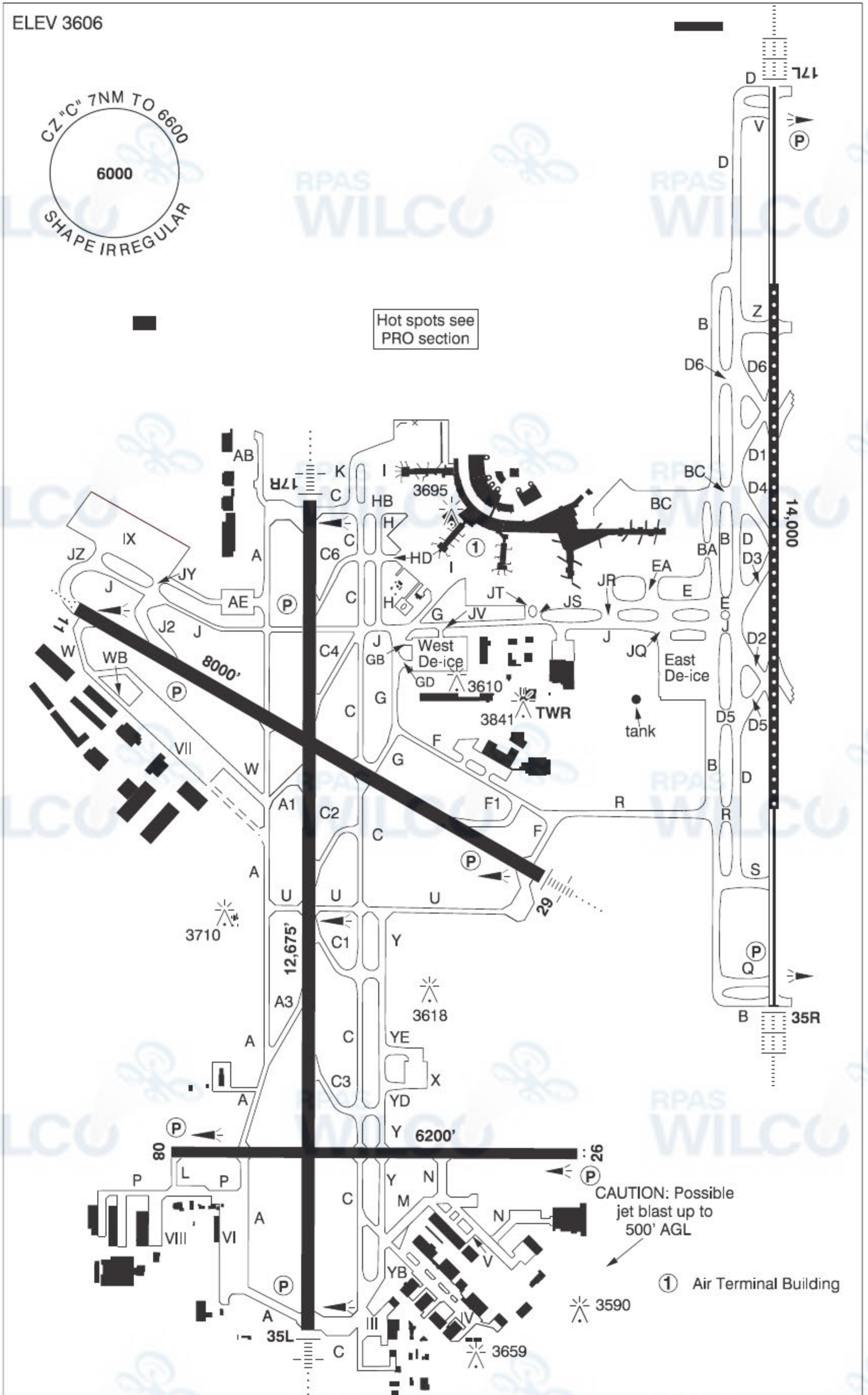
AIRDRIE AB

CEF4

REF	N51 15 50 W113 56 04 2.6SE 15°E (2012) UTC-7(6) Elev 3653' VTA A5005 LO2 HI3 T1	
OPR	Airdrie Airpark Ltd 403-466-7051 or 403-542-2141 Reg PPR	
PF	B-1 C-2,3,4,5,6	
FLT PLN		
FIC	Edmonton 866-WXBRIEF (Toll free within Canada) or 866-541-4102 (Toll free within Canada & USA)	
ACC	Edmonton IFR 888-358-7526	
SERVICES		
FUEL	100LL Self Serve 403-861-4199 or 403-585-7224 No hovering or ldg of helis allowed on twy near fuel tank or by acft tie-down areas; fuelling of helis allowed when towed to fuelling area only.	
RWY DATA	Rwy 12(123°)/30(303°) 5000x100 asphalt	
RCR	Opr Ltd win maint.	
LIGHTING	12-AS(TE LO), 30-AS(TE LO) ARCAL-122.9 type J	
COMM		
ATF	UNICOM ltd hrs O/T tfc 122.9 2NM 4800 ASL	
PRO	Rgt hand circuit Rwy 30 (CAR 602.96). Circuit hgt 4200 ASL or below. Arr/dep: ctc Calgary advsy 119.4 prior to entering Class "C" airspace.	
NOISE	Acft climb rwy hdg to 4200 ASL BPOC.	
CAUTION	Broken pavement on twy.	

CALGARY / YYC CALGARY INTL AB

CYYC



ALBERTA

AERODROME/FACILITY DIRECTORY

CALGARY / YYC CALGARY INTL AB (Cont'd)

CYYC

REF	N51 07 21 W114 00 48 15°E (2013) UTC-7(6) Elev 3606' VTA A5005 LO2 HI3 T1 CAP OC
OPR	The Calgary Airport Authority 403-735-1300 H24 Cert Ldg fees
PF	A-1,2,3,4,5,6
CUST	AOE 888-226-7277
FLT PLN	Pilots are to open/close VFR Flt Pln with Edmonton FIC via phone or Edmonton rdo 123.375 when practicable.
FIC	Edmonton 866-WXBRIEF (Toll free within Canada) or 866-541-4102 (Toll free within Canada & USA)
ACC	Edmonton IFR 888-358-7526
WX	METAR H24. TAF H24, issue times: 00, 03, 06, 09, 12, 15, 18, 21Z.
DUAT	Esso Avitat; Shell Aerocentre
SERVICES	
FUEL	100LL, JA-1 (FSII avbl), HPR
OIL	All
S	1,2,3,4,5,6
ARFF	DESIGNATED CAT 9
SUP FL	LHOX D & A-ice
JASU	CE16, Elect start 15/25
PVT ADV	Esso Avitat/Skyservice 128.85 403-291-4426; Shell AeroCentre/Sunwest Aviation 136.80 403-275-8121; Skyplan dispatch 122.95 403-275-2520; North Cariboo Air 131.25 403-717-1800 866-266-8690; Executive Flight Centre 122.0 403-295-7741 Fax 403-295-7784; Million Air FBO (AvFuel) 128.9 403-718-0447; Landmark Aviation/Signature Flight Support 122.85 403-295-4100
MIL CON	Sunwest Aviation Ltd. 403-275-8121
RWY DATA	Rwy 17L(165°)/35R(345°) 14,000x200 CONC Rwy 17R(165°)/35L(345°) 12,675x200 ASPH Rwy 11(105°)/29(285°) 8000x200 ASPH Rwy 08(075°)/26(255°) 6200x150 ASPH Rwy 08 up 0.37%
RWY CERT	Rwy 17L RVR 600/Rwy 35R RVR 600 AGN VI Rwy 17R RVR 1200(1/4sm)/Rwy 35L RVR 1200(1/4sm) AGN VI Rwy 11 RVR 1200(1/4sm)/Rwy 29 RVR 1200(1/4sm) AGN VI Rwy 08/26 AGN V
TWY CERT	Twy: AB, GB, JT, P, WB AGN IIIB Twy: M, N, W, YB AGN IV Twy: A, A1, A3, C, C1, C2, C3, C4, C6, F, F1, G, GD, H, HB, HD, J, J2, K, L, U, Y, YD, YE AGN V
TWY	Twy AB, GB, JT, P, WB, YD & YE rstd to acft with wingspan of 118' or less. Twy GB & GD rstd to one-way westbound. Twy GB, GD & P uncontrolled. Twy M, N & W rstd to acft with wingspan of 170' or less. WIDE BODY AIRCRAFT: Twy C: right turn on YB rstd to acft with wingspan of 118' or less. Twy F: left turn on F1 rstd to acft with wingspan of 79' or less. Left turn on G rstd to acft with wingspan of 118' or less. Twy F1: right turn on F rstd to acft with wingspan of 79' or less. Twy G: right turn on F rstd to acft with wingspan of 118' or less. Twy J (eastbound): right turn on J2 rstd to acft with wingspan of 79' or less. Twy J2: left turn on J rstd to acft with wingspan of 79' or less. Twy Y: right turn on YB rstd to acft with wingspan of 118' or less. Twy YB: left turn on C rstd to acft with wingspan of 118' or less. Left turn on Y rstd to acft with wingspan of 118' or less.
APRON	Aprons I, VII, IX, X & West De-Ice: PPR Airport Ops is required.
RCR	Opr CRFI, PLR/PCN

ALBERTA

AERODROME/FACILITY DIRECTORY

CALGARY / YYC CALGARY INTL AB (Cont'd)

CYYC

LIGHTING	08-(TE ME) P2, 26-AS(TE ME) P2, 11-AO(TE HI) P3, 29-AN(TE HI) P3, 17L-AL(TE HI A TDZL) P3, 35R-AL(TE HI A TDZL) P3, 17R-AN(TE HI) P3, 35L-AN(TE HI) P3
COMM	<p>RCO Edmonton rdo 123.375 (FISE) 126.7 (bcst)</p> <p>ATIS 128.225</p> <p>CLNC DEL 120.825 all dep acft ctc CLNC DEL</p> <p>APRON APRON I: Apron Advisory 121.3 12-07Z± O/T bcst intentions</p> <p>GND 121.9 (West) 125.35 (East) 275.8</p> <p>TWR 118.4 (West) 118.7 (East) 236.6 (E) (emerg only 403-216-7116)</p> <p>ARR 123.85 (West) 125.9 (East) 126.525 127.15 294.9</p> <p>DEP 119.8 (East) 124.52 (West) 255.1</p> <p>VFR ADV 119.4</p> <p>PAL Edmonton Ctr 124.525 127.775 243.5</p>
NAV	<p>VOR/DME YYC 116.7 Ch 114 N51 06 55 W113 52 55 (3573')</p> <p>DME IYC 111.5 Ch 52 N51 05 57 W114 01 23 (3559')</p> <p>IGY 110.55 Ch 42(Y) N51 07 28 W114 02 00 (3570')</p> <p>ILG 109.15 Ch 28(Y) N51 08 44 W113 59 19 (3628')</p> <p>IRF 110.75 Ch 44(Y) N51 06 46 W113 59 19 (3603')</p> <p>ILS IYC 111.5 (Rwy 35L) RVR LOC reliable only within 10° either side of centreline;</p> <p>IEM 109.3 (Rwy 17R) RVR LOC reliable only within 10° either side of centreline;</p> <p>ILG 109.15 (Rwy 17L) RVR LOC reliable only within 10° either side of centreline;</p> <p>IRF 110.75 (Rwy 35R) RVR LOC reliable only within 10° either side of centreline;</p> <p>IAQ 110.9 (Rwy 29) RVR LOC reliable only within 10° either side of centreline;</p> <p>IGY 110.55 (Rwy 11) RVR LOC reliable only within 10° either side of centreline</p>
PRO	<p>Acft less than 3000 kg not auth for arr or dep 23-05Z± exc heli.</p> <p>Pilots should refer to Canadian Airport Charts (CAC) to obtain details on established hot spots, prior to operating on maneuvering areas. CAC are available for free on the NAV CANADA website.</p> <p>AIRSPACE: see VTPC for VFR routes & pro. Transponder rqr'd in class "C" & "D" airspace & CZ.</p> <p>Pilots to close VFR flt plans with Edmonton FIC (phone) when practicable or request closure fr ATC. Pilots of acft not filing a VFR or IFR flt pln within or into Calgary Class "C" Airspace, are to ctc ATC 888-882-2254 for transponder code prior to flt. PPR for Balloon flt in Calgary CZ. Balloon flt is rqr'd to remain min 4NM fr any rwy. Cinc and discrete transponder code rqr'd prior to entering CZ. Ctc Edmonton ACC 888-882-2254.</p> <p>AIRPORT: High intensity rwy ops in effect.</p> <p>ATC: <u>IFR Clearance Acknowledgement</u></p> <p>IFR clearance read back with Calgary Tower clearance delivery shall include the acft call sign, assigned SID name and transponder code.</p> <p>MULTILATERATION: Acft transponders must be kept on at all times when manoeuvring on the airport (turned on prior to brake release and on arrival, on until final engine shutdown).</p> <p>Pilots that do not have a transponder code issued by ATC must squawk 1000 when taxiing.</p> <p>PEAK HOURS: 23-05Z±</p> <p>CIRCUITS: No circuits.</p> <p>TRAINING FLIGHTS: No ab initio tng. Private pilot's license min rqr'd for ops in ctrl zone. Tng flts proh, no arr or dep dur peak hours. PPR for Tng flts, ctc VFR/IFR: 888-882-2254.</p> <p>LOW AND REDUCED OPERATING PROCEDURES (LVOP/RVOP): See CAP</p> <p>NOISE: Noise oprg restriction & noise abatement procedure in effect. See CAP</p> <p>MILITARY: Mil jet acft circuits & overhead break pro proh.</p>

ALBERTA

AERODROME/FACILITY DIRECTORY

CALGARY / YYC CALGARY INTL AB (Cont'd)

CYYC

PRO (Cont'd)

DE-ICING PROCEDURES:

1. Contact CALGARY DE-ICE on 129.5 30 min prior to push-back with acft type and estimated push-back time.
2. Contact CALGARY DE-ICE on 129.5 5 min prior to push-back to confirm treatment type and DE-ICE pad assignment.
3. Follow normal push-back procedures and advise Apron Advisory EAST or WEST DE-ICE pad has been assigned.
4. East Pad - Enter from Twy J at Twy JQ. When instructed by GROUND CONTROL, contact PAD CONTROL on 129.125 prior to entering pad.
5. West Pad - Enter from Twy J at Twy JV. When instructed by GROUND CONTROL, contact PAD CONTROL on 122.35 prior to entering pad.
6. Follow PAD CONTROL instructions, signboards and guidance lines to the assigned staging position or de-icing bay and confirm "BRAKES SET" when in position with nosewheel on stopbar.
Caution: The wingtip to tail clearance for acft taxiing in the EAST pad from JQ behind staged acft is only assured when the staged acft nosewheel is on the stopbar.
7. If assigned a staging bay, monitor PAD CONTROL until further instructed.
8. When directed by PAD CONTROL, contact ICEMAN (East 123.35, West 122.725) and confirm "BRAKES SET, AIRCRAFT CONFIGURED FOR DE-ICE."
9. When de-ice is complete, do not move aircraft. When directed by ICEMAN, contact PAD CONTROL on assigned frequency.
10. Advise PAD CONTROL when ready to taxi. PAD CONTROL will assign appropriate GROUND CONTROL frequency to obtain taxi clearance.
11. Queuing is not permitted on Twy J, staging positions are provided on both EAST and WEST pads, reference DE-ICE Facility diagram.

See CAP for additional directions & restrictions.

CAUTION:

During the de-icing process, thrust setting must not exceed gnd idle and/or propellers must remain feathered at all times.

Engine run-ups will only be approved by PAD CONTROL or ICEMAN when ops permit and when it is safe to do so. Engine fan blade ice shedding run-ups are proh on the de-ice pads.

CAUTION

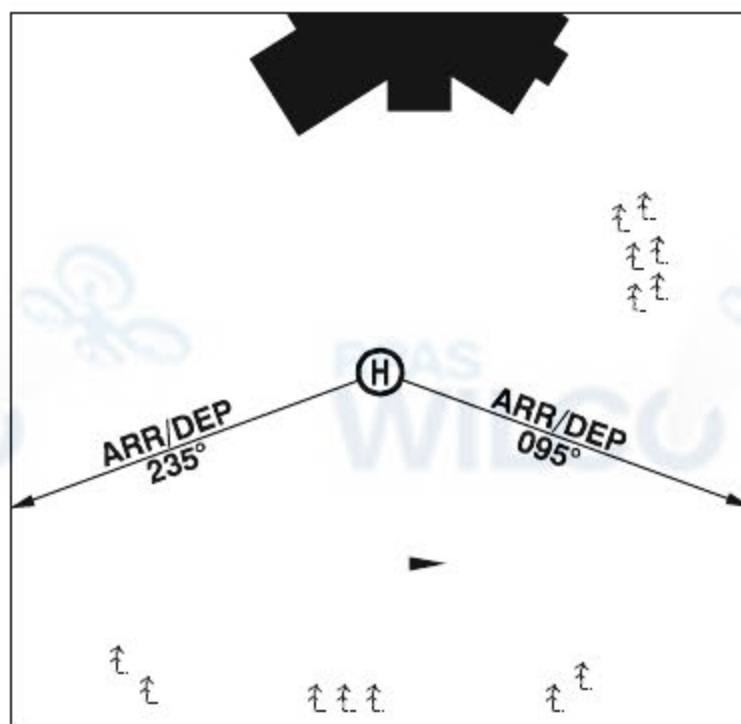
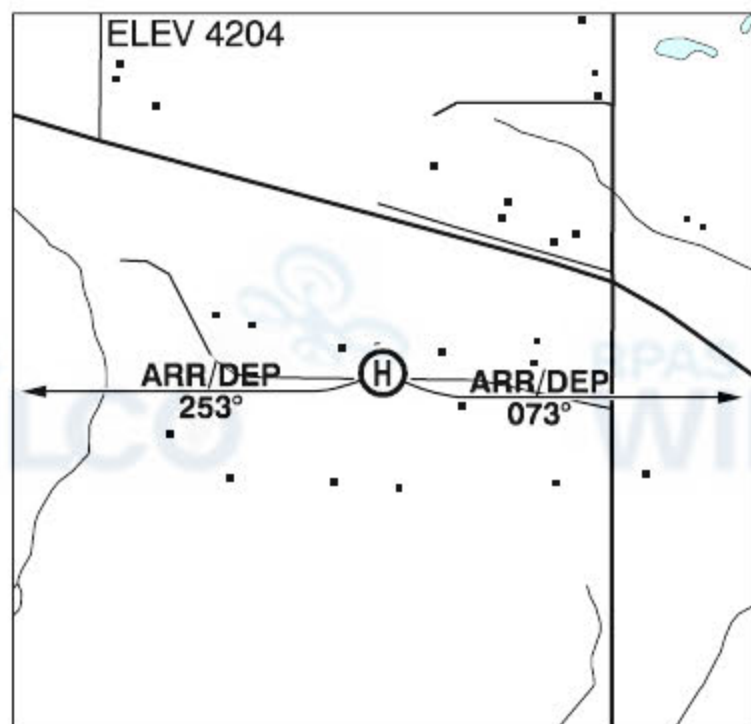
Coyotes at large on aprt. Extv waterfowl activity vic A/D year round.

ALBERTA

AERODROME/FACILITY DIRECTORY

CALGARY / K. COFFEY RESIDENCE AB (Heli)

CKC4



REF	N51 09 56 W114 18 52 3NW 15°E (2012) UTC-7(6) Elev 4204' VTA A5005
OPR	Ken Coffey 403-680-9467 Reg PN
PF	C-1,2,3,6 D-4,5
FLT PLN	<p>FIC Edmonton 866-WXBRIEF (Toll free within Canada) or 866-541-4102 (Toll free within Canada & USA)</p> <p>ACC Edmonton IFR 888-358-7526</p>
HELI DATA	<p>FATO/TLOF 64' dia GRASS Safety Area 85' dia</p> <p>Max heli overall length 42.7'</p> <p>RCR Opr</p>
COMM	<p>ATIS 127.9 14-06Z‡</p> <p>GND Springbank Gnd 121.8 14-06Z‡</p> <p>TWR Springbank Twr 118.2 (outer) 120.7 (inner) (V) 16-24Z‡ 118.2 (V) 14-16Z‡ & 00-06Z‡ emerg only 403-216-7132</p> <p>MF tfc 118.2 06-14Z‡ O/T Springbank Twr 118.2 5NM 5500 ASL (CAR 602.98)</p>
PRO	Arr/Dep curved flt path see sketch 095° thru 073° fr heli and 235° thru 253° fr heli. All slope 8% (H3). PPR opr 403-680-9467 CTC Springbank GND 121.8 prior to tkof for class C clnc and dep info
CAUTION	Stone Wall and conc patio N of Safety area. Trees 100' S of heli. Lochend Lake VFR Rte 0.5NM W of heli. Hwy 1A VFR Rte 0.25NM N of 095° flt path.

ALBERTA

AERODROME/FACILITY DIRECTORY

CALGARY (BOW CROW) AB (Heli)

CEP2

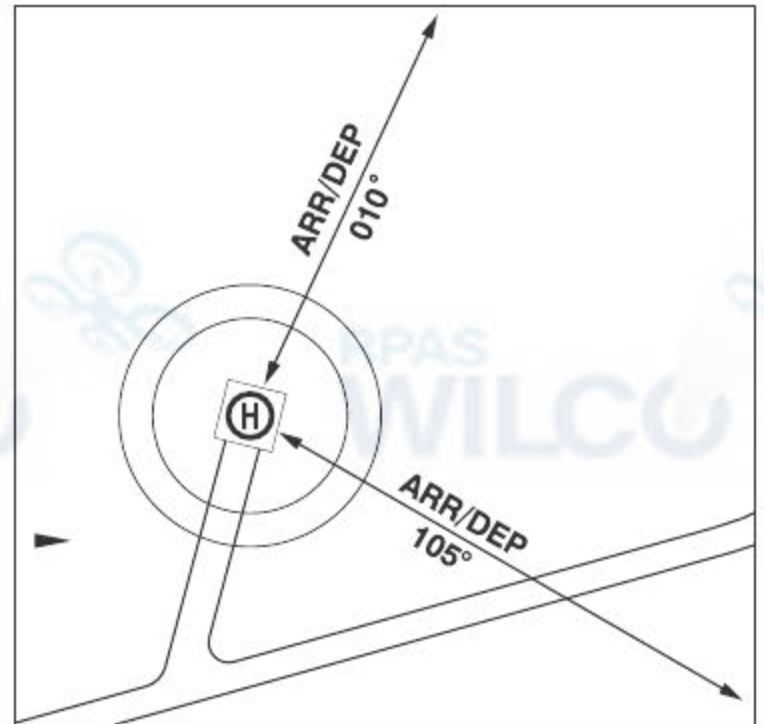
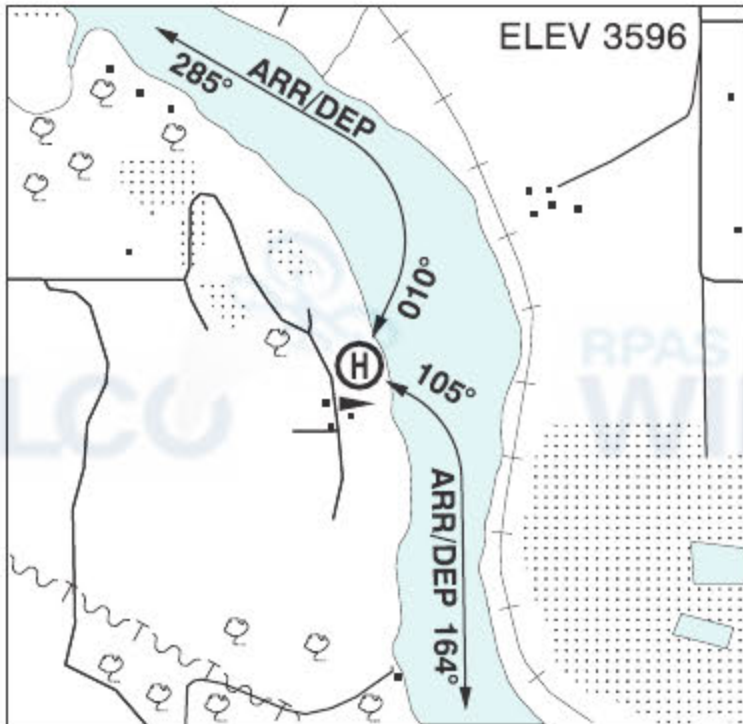
REF	N51 06 11 W114 12 54 15°E (2014) UTC-7(6) Elev 3540' VTA A5005	
OPR	Alberta Sustainable Resource Development, Forest Protection Division 403-297-8828/8822 Cert PPR	
PF	C-1,2,3,4,5,6	
FLT PLN		
FIC	Edmonton 866-WXBRIEF (Toll free within Canada) or 866-541-4102 (Toll free within Canada & USA)	
ACC	Edmonton IFR 888-358-7526	
HELI DATA	30' dia 100' dia Max heli overall length 57'	
COMM	Eastbound Calgary VFR ADV 119.4 Westbound Springbank TWR 118.2	
A/G	Dispatch 122.9 AM (Seasonal)	
PRO	Arr/dep 105° to 252° fr heli, slope 16% (H3).	
CAUTION	P-Lines to N.	

ALBERTA

AERODROME/FACILITY DIRECTORY

CALGARY / ELEPHANT ENTERPRISES INC. AB (Heli)

CEE2



REF	N51 06 55 W114 17 44 15°E(2015) UTC-7(6) Elev 3596' VTA A5005
OPR	Elephant Enterprises Inc. 403-850-9123 Reg PPR
PF	C-1,2,3,6 D-4,5
FLT PLN	
FIC	Edmonton 866-WXBRIEF (Toll free within Canada) or 866-541-4102 (Toll free within Canada & USA)
ACC	Edmonton IFR 888-358-7526
HELI DATA	FATO 64' dia GRASS TLOF 20' x 20' CONC Safety Area 85' dia Max heli overall length 42.7'
COMM	
ATIS	127.9 14-06Z‡
GND	Springbank Gnd 121.8 14-06Z‡
TWR	Springbank Twr 118.2 (outer) 120.7 (inner) (V) 16-24Z‡ 118.2 (V) 14-16Z‡ & 00-06Z‡ emerg only 403-216-7132
MF	tfc 118.2 06-14Z‡ O/T Springbank Twr 118.2 5NM 5500 ASL (CAR 602.98)
PRO	Ctc Springbank Gnd 121.8 prior to tkof for class C clnc and dep info. Arr/dep curved 010° to 285° fr heli, slope 8% (H3), day use only. Arr/dep curved 105° to 164° fr heli, slope 8% (H3), day use only.
CAUTION	Lochend Lake VFR route 1.0NM W of heli